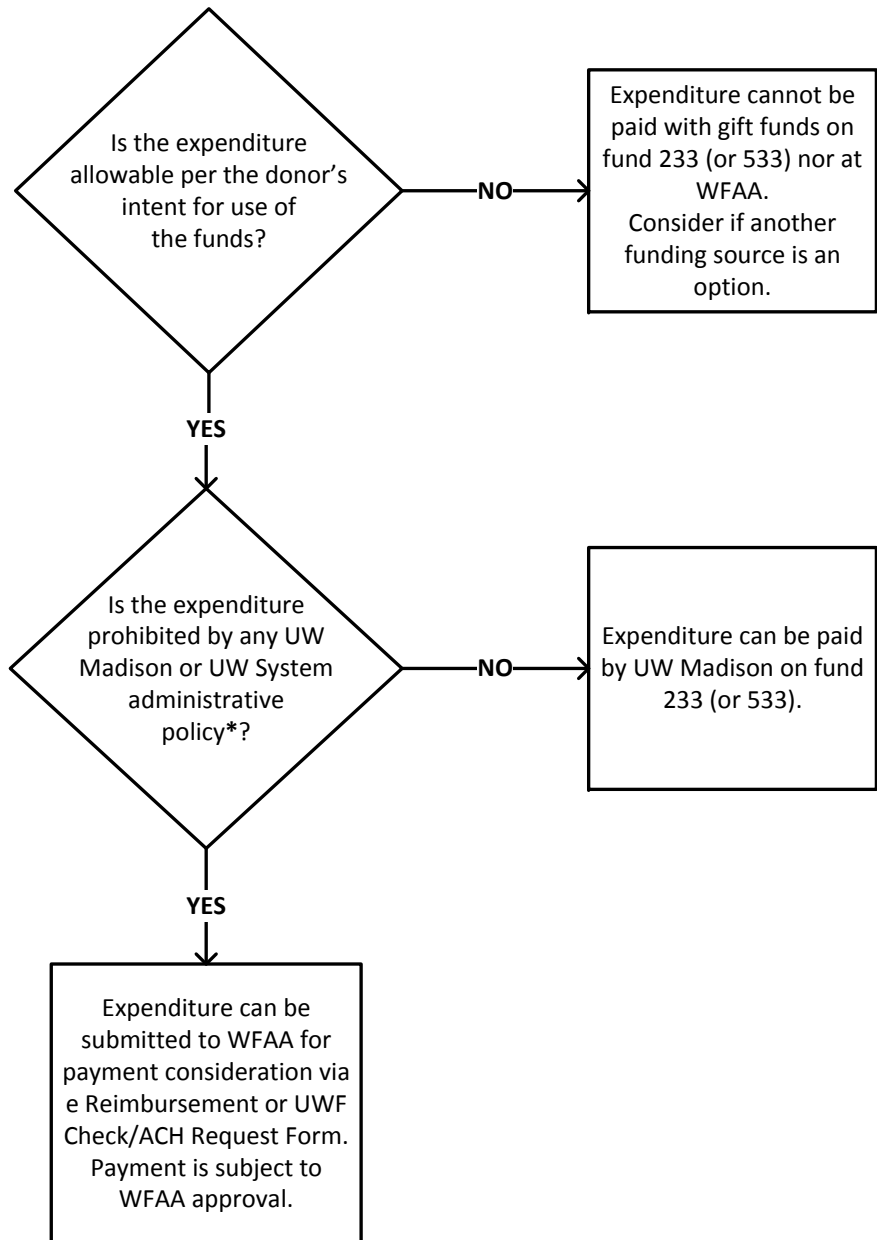


Gift Fund Expenditure Decision Tree

To help determine when it's okay to use gift funds for an expenditure.



* Common applicable policies:
- UWSYS Policy 312, *Official Functions*
- UWMSN Policy 330, *Business Meals*
- UWMSN Policy 340, *Official Functions & Expenses*
- WFAA *Fund Disbursement Policy*

Buzzwords:
Flowers; Nominal gift; Employee recognition or morale;
Board of Visitors; Spouse; Alumni; Fundraising