



WISCONSIN
UNIVERSITY OF WISCONSIN-MADISON

Financial Management Meeting

June 10, 2014

Agenda

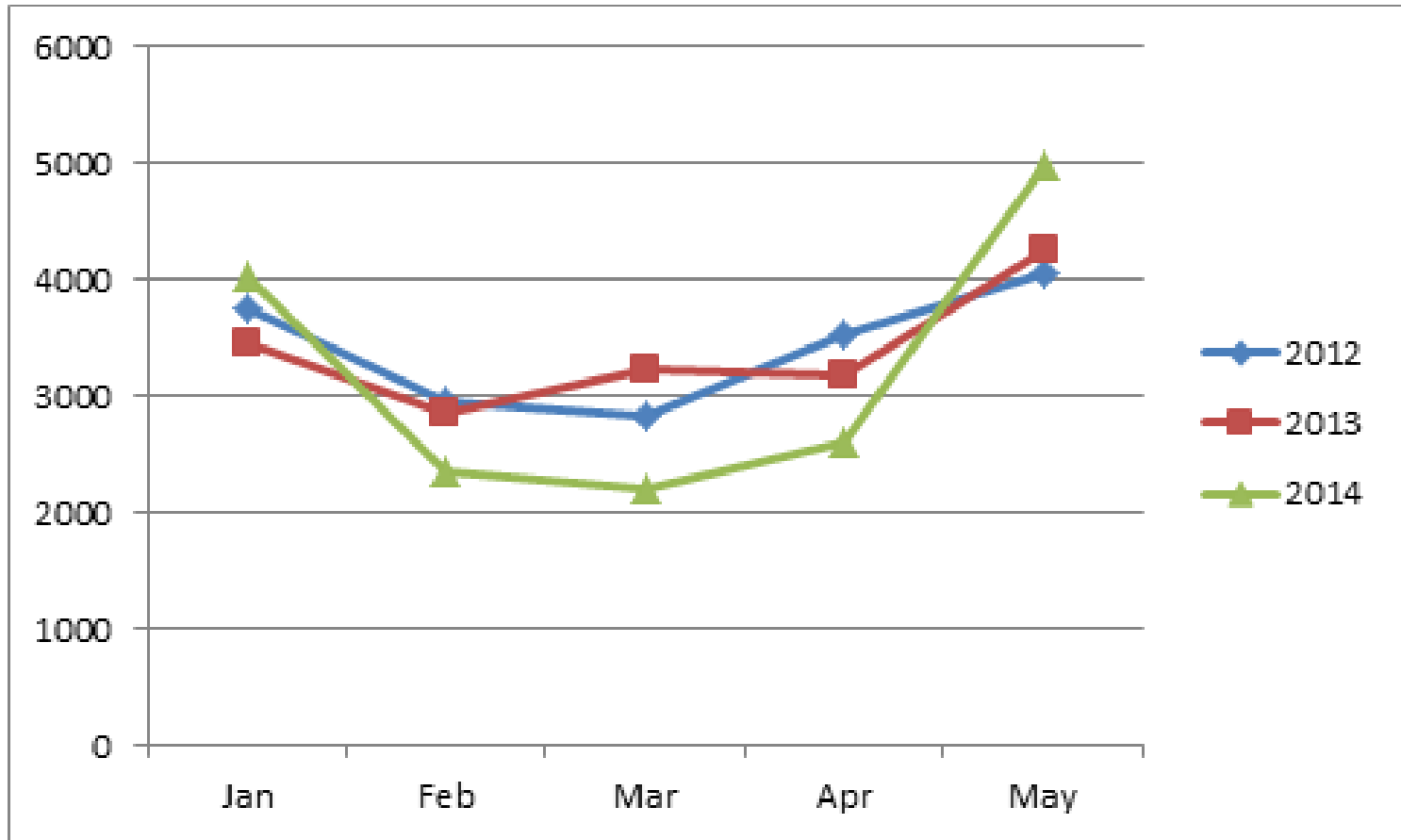
- | | | |
|------------|----------------------------------|---|
| 9:30 a.m. | Welcome & Introductions | |
| 9:45 a.m. | Internal Control Project Update | Martha Kerner / Dan Langer |
| 10:00 a.m. | Accounting Services Updates | |
| | • Year-End Accounting Matters | Susie Maloney/Dan Langer/José Carus (15 mins) |
| | • DP/PIR Update | Liv Goff/Rusty Haines (10 min) |
| | • Payments to Students | Jose Carus/Mehdi Rezai/Russell Schwalbe (10 mins) |
| | • Jet Revenue Tool (JRR) | Sharon Hughes (10 mins) |
| | • Check Scanning Implementations | Mike Halton (10 mins) |
| 11:00 a.m. | Q&A | |
| 11:30 a.m. | Adjourn | |

Year-End Accounting Matters

End of Year Matters

DP/PIR Submissions

Count of DP's/PIR's



Payments to Students

Payments to Students

Cash Management – Jet Revenue Tool (JRR) enhancements

Improvements to the new tool

- Limiting sales tax calculations to occur on revenue codes starting w/ 9XXX (does not include 9050/9051).
- Blocking account codes starting w/ 1XXX, 6XXX, 7XXX, 8XXX.
- Ensuring GPR funds use account codes 905X/906X for receipting.
- Ensuring the account codes 9941 and 9942 are balanced in total by debits and credits.
- Limiting access to funds such as 133, 14X, 233, 150, 161

Cash Management – Electronic Check Scanning

Current Users

- Athletics
- Cash Management
- Division of Continuing Studies
- Research & Sponsored Programs
- Risk Management
- School of Business Dean's Office
- Wis Veterinary Diagnostic Laboratory
- Wisconsin TechSearch

In Process of Implementing

- Biotechnology Center
- State Lab of Hygiene
- Wis Center for Education Research

Possible Future Users

- CALS Dean's Office
- CALS Short Course Dorms
- Space Science & Engineering
- UW Press
- Wisconsin Union

Cash Management – Electronic Check Scanning

Increased Efficiencies Experienced by Departments

- Athletics – no longer needed bank lockbox services; reduced time for auditing and reconciling.
- Cash Management – no bank adjustments; deposits always balance.
- Wis Veterinary Diagnostic Laboratory – auto import data from a check scan report to an XL spreadsheet; reduced manual data entry.

Questions?

Future Financial Management Meetings

Rooms 1106 & 1108, 21 N Park Street

9:30-11:30AM

2014

August 12

October 14

December 9